

# 2020 Community Overview

A SOCIO-ECONOMIC PROFILE

## Village of Clive

**POPULATION: 715**

Trading Area Population: 8,000

### Median Age

Male	37.4
Female	36.5

**Number of Businesses:** 63 (2018)

**Permits Issued (2019):** 21

**Total Permit Value (2019):**  
\$1,162,702

### Average Household Income

**\$95,291**

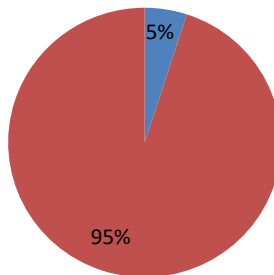
**Average After-Tax  
Household Income**

**\$78,737**

2015

### Property Assessments

■ Non-Residential  
■ Residential

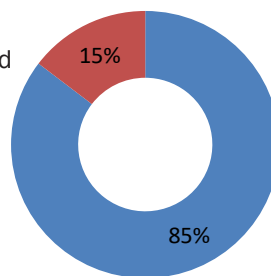


### In the Labour Force

**405**

Participation Rate 68%

■ Employed  
■ Unemployed



village of



### TRANSPORTATION

Located in Central Alberta, just off Highway 12 and fifteen minutes east of the QEII, Clive is easily accessible for vehicular traffic. Clive also is fortunate to have a functioning CP rail through the village.

A proud member of



**Total Households  
for Tenure  
317**

**Owned 82%  
Rented 18%**

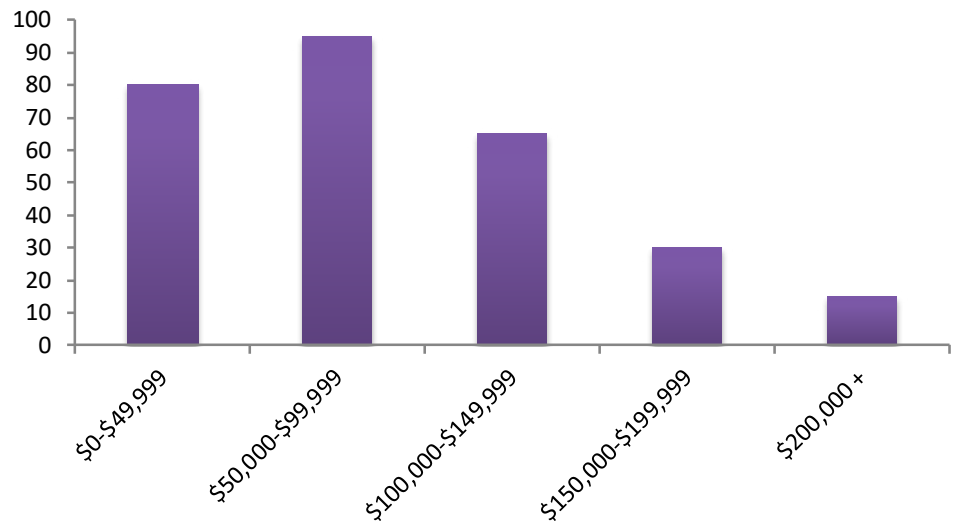
### Housing by Structure

Single Family	<b>213</b>
Multi-Family	<b>4</b>
Apartments	<b>0</b>
Movable Dwellings	<b>100</b>

### Average Household Consumption

Shelter	<b>\$23,131</b>
Food	<b>\$10,162</b>
Household operation & furnishings	<b>\$8,822</b>
Health care	<b>\$3,697</b>
Transportation	<b>\$18,900</b>
Recreation & Entertainment	<b>\$8,183</b>
Personal care & clothing	<b>\$6,177</b>
Child Care	<b>\$467</b>
Education & books	<b>\$1,253</b>
Miscellaneous expenditures	<b>\$2,592</b>
<b>Total</b>	<b>\$83,384</b>

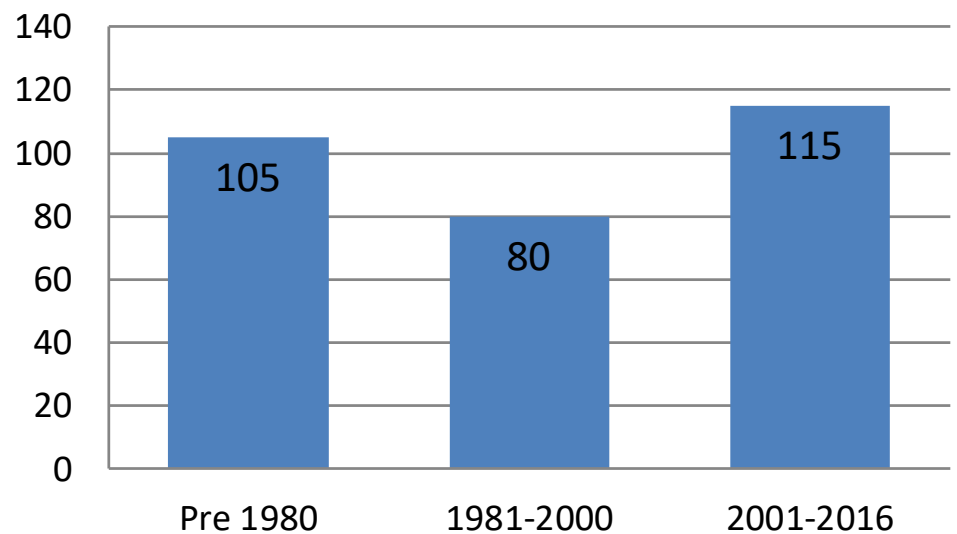
### Number of Households by Income Group



Affordable lot prices within a 15-minute driving distance of the major centres makes Clive an ideal spot for young families starting out and for those that want to enjoy country living with quick access to all amenities.



### Occupied Private Dwelling by Period of Construction



## Quality of Life - Recreation/Culture/Outdoor

Clive has an active volunteer community. It sports an indoor arena, curling rink, library, and community hall. Outdoor facilities include ball diamonds, soccer pitch, outdoor fitness gym, playgrounds, and outdoor rink.



### Occupations

(number of jobs)

Trades, transport and equipment operators and related occupations	<b>150</b>
Sales and service occupations	<b>65</b>
Business, finance and administration occupations	<b>60</b>
Management occupations	<b>25</b>
Natural resources, agriculture and related production occupations	<b>25</b>
Manufacturing and utilities	<b>25</b>
Natural and applied sciences and related occupations	<b>15</b>
Health occupations	<b>10</b>
Education, law and social, community and government services	<b>10</b>
Art, culture, recreation and sport	<b>10</b>

### Top Ten Industries

(number of jobs)

Construction	<b>95</b>
Manufacturing	<b>40</b>
Retail trade	<b>35</b>
Mining, quarrying and oil and gas extraction	<b>30</b>
Transportation and warehousing	<b>30</b>
Health care and social assistance	<b>25</b>
Administrative and support, waste management and remediation services	<b>20</b>
Accommodation and food services	<b>20</b>
Services other than public administration	<b>20</b>
Wholesale trade	<b>15</b>

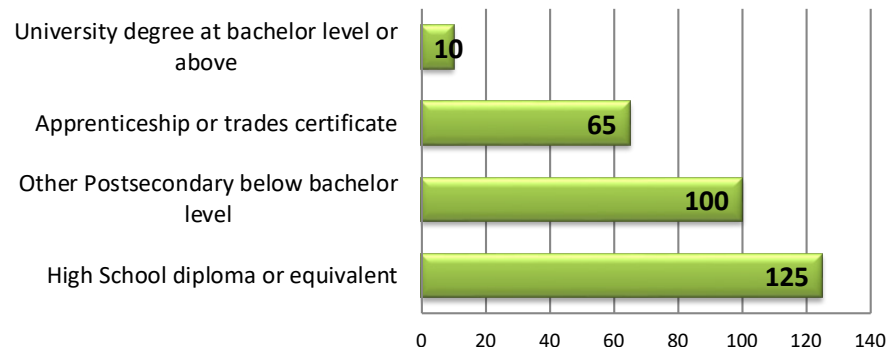
### Top Employers

Clive School (K-9)  
Roosters Roadhouse  
Clive Village Foods

### Vehicle Registrations (2017)

**2,033**

### Highest Educational Attainment (Ages 25-64)







# 2020 Community Overview

A SOCIO-ECONOMIC PROFILE

K-9 Enrollment

**236** (2017)

Post-secondary Enrollment

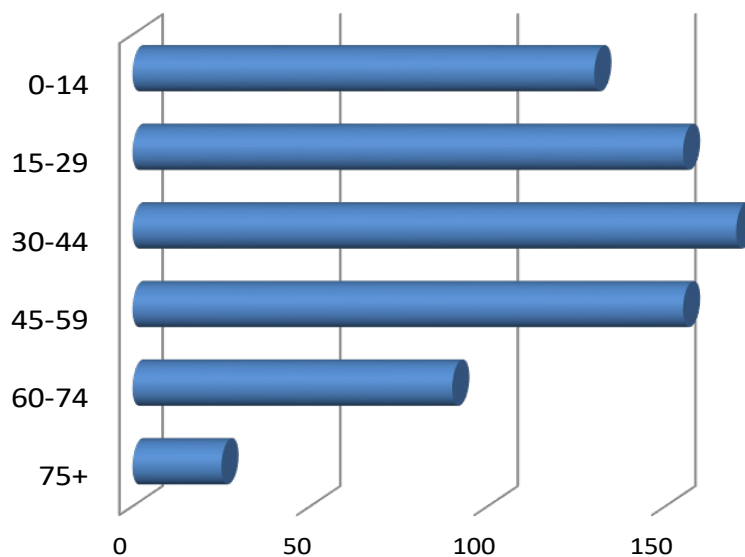
**50** (2017)

New Apprentices

**5**

(2015)

Population by Age Group



For more information, contact:

**Planning & Development**

Ph: 403-784-3366

Email: [admin@clive.ca](mailto:admin@clive.ca)

[www.clive.ca](http://www.clive.ca)

Produced in partnership with



[www.centralalberta.ab.ca](http://www.centralalberta.ab.ca)

The data used to prepare this report has been sourced from the Alberta Regional Dashboard, Stats Canada 2016 Census and municipalities. The reference period is the calendar year 2015 for all Census income variables.

This report is for information purposes only and CAEP does not assume any responsibility or liability by providing it. While every effort has been made to control errors, users are advised to confirm any numbers before making decisions or assumptions based on the information in this document. Data prepared by Pinnacle Communication & Media Inc. on behalf of CAEP.

For more information about CAEP, contact:

Ph: 403-357-2237

Email: [info@caepalberta.com](mailto:info@caepalberta.com)